

ITEM 34. PARKING – DISABILITY PARKING – RESERVOIR STREET SURRY HILLS

TRIM RECORD NO: 2016/287614

RECOMMENDATION

It is recommended that the Committee endorse:

- (A) The reallocation of parking on the southern side of Reservoir Street, Surry Hills between the points 22.2 metres and 30 metres east of Riley Street as “Disability Parking Only”; and
- (B) The City to investigate the feasibility of installing of a kerb ramp adjacent to the disability space.

VOTING MEMBERS FOR THIS ITEM

<i>Voting Members</i>	<i>Support</i>	<i>Object</i>
City of Sydney		
Roads and Maritime Services		
NSW Police – Surry Hills LAC		
Representative for the Member for Sydney		

DECISION

BACKGROUND

A resident of Reservoir Street has requested a disability parking space in Reservoir Street Surry Hills. The resident has advised they are not in a wheelchair but cannot physically walk far.

COMMENTS

Reservoir Street, Surry Hills east of Riley Street is designated for two way traffic flow with an approximate width of 9 metres. The road and footway grades are relatively flat adjacent to this proposed space.

The kerb space is currently signposted as timed permit parking “1P 8am-10pm Mon-Sat Permit Holders Excepted Area 18 on both sides of Reservoir Street.

Under existing conditions, vehicles park on both sides of the street which reduces the trafficable lane for two-way traffic flow to an approximate width of 4.8 metres. The remaining width is allocated for on-street parking.

Footpaths (approximately 3 metres wide) are provided on the southern side of Reservoir Street, adjacent to the dedicated disability parking space.

The Australian Standard for on-street disability parking (AS2890.6-2009) requires the provision of a 3.2 metre wide by 7.8 metre long bay.

A 7.8 metre long bay is proposed however with consideration for the constrained width of Reservoir Street, the 3.2 metre bay width cannot be accommodated either within the carriageway or the adjacent footpath. However as Reservoir Street is a dead-end street and has very low traffic volumes, low vehicle speed and only provides local access then the requested disability space can be provided with reduced dimensions.

The City has undertaken a risk assessment for the proposed disability parking space and the assessment has been sent to Roads and Maritime Services (RMS) for consideration.

CONSULTATION

The City consulted local residents and businesses in the area. There were 70 letters sent out with no responses supporting or opposing the proposal.

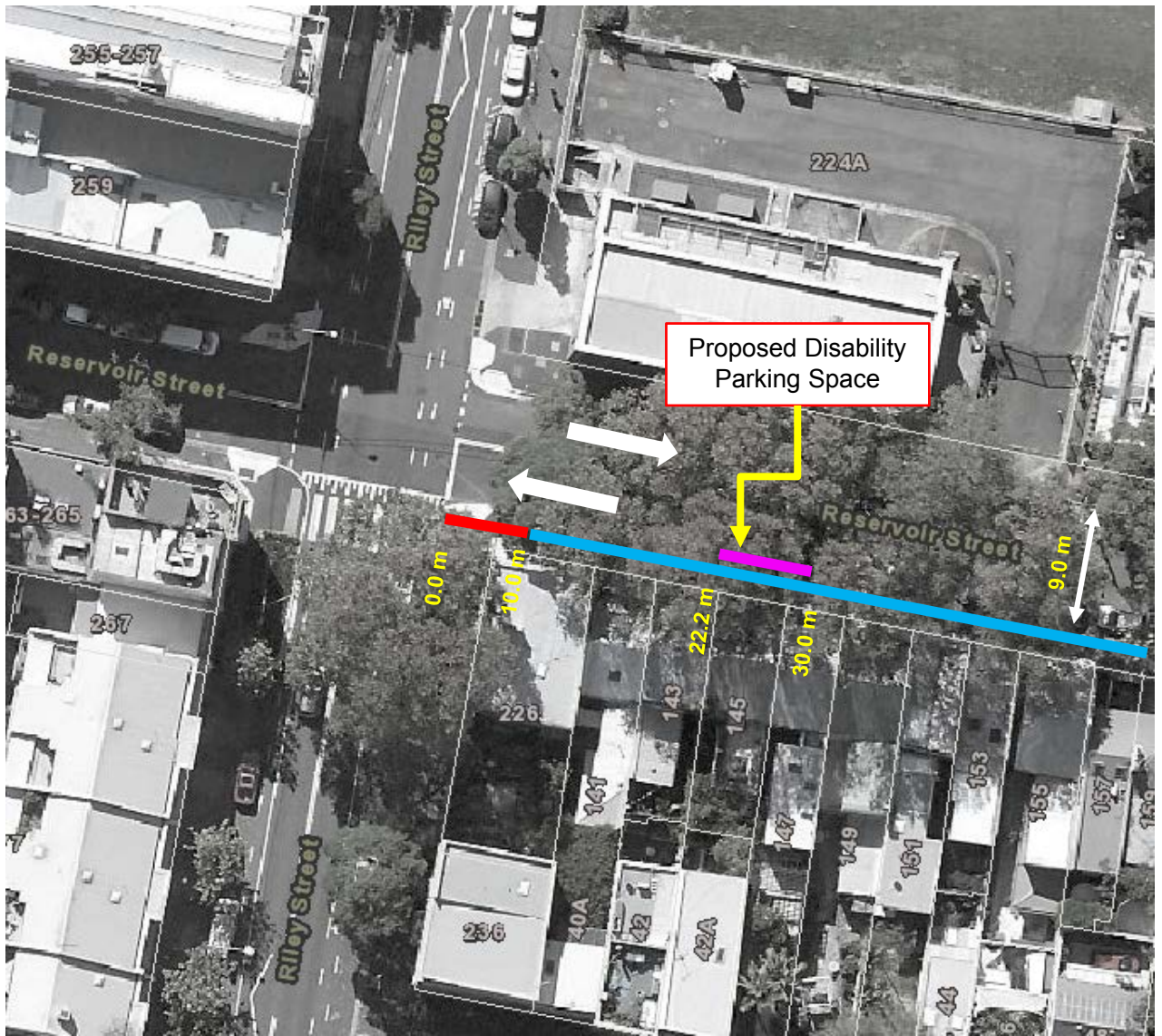
FINANCIAL

Funds are available in the current budget.




ATTACHMENTS

Parking – Disability Parking – Reservoir Street Surry Hills

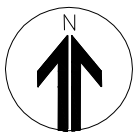
Ganesh Vengadasalam, Engineering Traffic Officer



Proposed Disability
Parking Space

	Existing No Stopping		Proposed Disability Parking
	Existing 1P 8am-10pm Mon-Sat Permit Holders Excepted Area 18		

Source: Dekho (May 2016)



PROPOSAL

RESERVOIR STREET, SURRY HILLS
PROPOSED DISABILITY PARKING



